



X-Eng is a division of
Foundry 4x4 Limited
The Old Bakery,
Rear of Vale Terrace,
Tredegar, Gwent. NP22 4HT

X-Tendoor 2nd Row Door Extenders Fitting Instructions

Thank you for choosing to buy our 2nd row door extenders for all 4/5 door Defenders.

Fitting is very straightforward and will only take a few minutes per side.

This is the kit of parts you should have received. We have supplied more washers than you need - so don't worry if you have several left over!



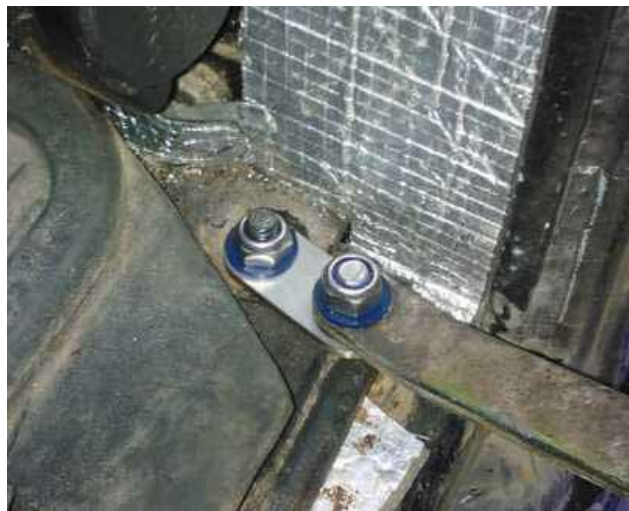
The first step is to un-bolt the original door stay from the bracket on the seat box as shown. You can discard the original nut &



There are several options for how you fit the bolt & washers depending on how thick your carpets & floor mats are. This vehicle had neither and you can see how close the nut comes to the floor fixing screw below.



Whereas in this case the vehicle is fitted with floor mats - and it has been necessary to turn the bolt upside down - the head of the bolt is much slimmer than the nut, providing additional clearance.



Some people prefer to allow the extender to articulate as the door closes (as shown Right), but others for the extender to be bolted rigidly in line with the door stay.

If you want it to be rigid, Use the stainless washers and tighten the bolt. If not use the Nylon, tighten then loosen 1/4 Turn. The nut on the seat box bracket should use Nylon washers + one stainless and be tightened then backed off 1/4 turn.

Once fitted, the door will open leaving a small (a couple of mm) gap between the edge of the door and door pillar. The size of the gap is determined by how thick the rubber buffer inside the door is.

If you find the door hits the pillar you can either replace the buffer, or using the stainless washers, rigidly bolt the extender to the door stay at an angle to limit the door opening slightly.

